


INQUESOMNIA



By E.T. Robinson

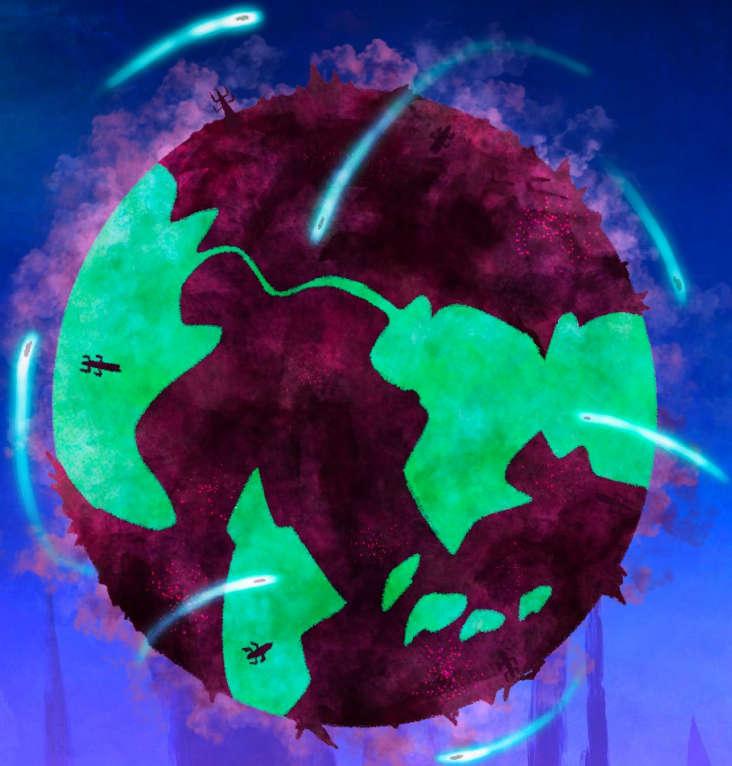
Contents

1. Story
2. World of Chaos
3. World of Order
4. Characters
5. Dante
6. Virn
7. Jill
8. Beatrice
9. Illustrations
10. Test Comic

Story

In his sleep, Dante awakens in the world of chaos with no memory of a past existence. He befriends the twin scavengers Virn and Jill and together they search for the one wise and powerful enough to answer his most burning questions “What am I? Who am I? Why do I exist?” They eventually infiltrate the world of order seeking information only to discover a morally bankrupt vacation resort run by enslaved angels. The group meets a young angel named Beatrice who quickly becomes enamored by Dante, despite his dislike of her. They take her with them as the team escapes the world of order and return to chaos to continue the search. During Dante’s travels he meets many denizens of the Chaos world and helps them with various problems. He also is forced to face harsh environments, strange creatures, and the nefarious puppets of sin.

World of Chaos



World of Chaos

- Ruled over by the Lord of Chaos, his main export is chaos.
- Balances out the level of order and chaos in the universe.
- Inhabited by The Chaoids which are basically purple nocturnal humans and a plethora of mind boggling monsters, even some of the vegetation seems to be a live.
- The Puppets of Sin have the world cut up in to their individual territories. Though these borders are constantly changing do to infighting between the seven.
- Chaoids live in scattered villages built from ruins.

World of Order



3

World of Order

- Ruled over by the Queen of Order, things are done her way or not at all.
- Balances out the level of order and chaos in the universe.
- Treated like a vacation resort by beings with lots of control over things, like world leaders.

Characters



Dante

An unassuming boy with an unbridled curiosity and deadpan delivery.



Dante Turnaround



5a

Virn

A punk chaoid scavenger always in search of fortune.



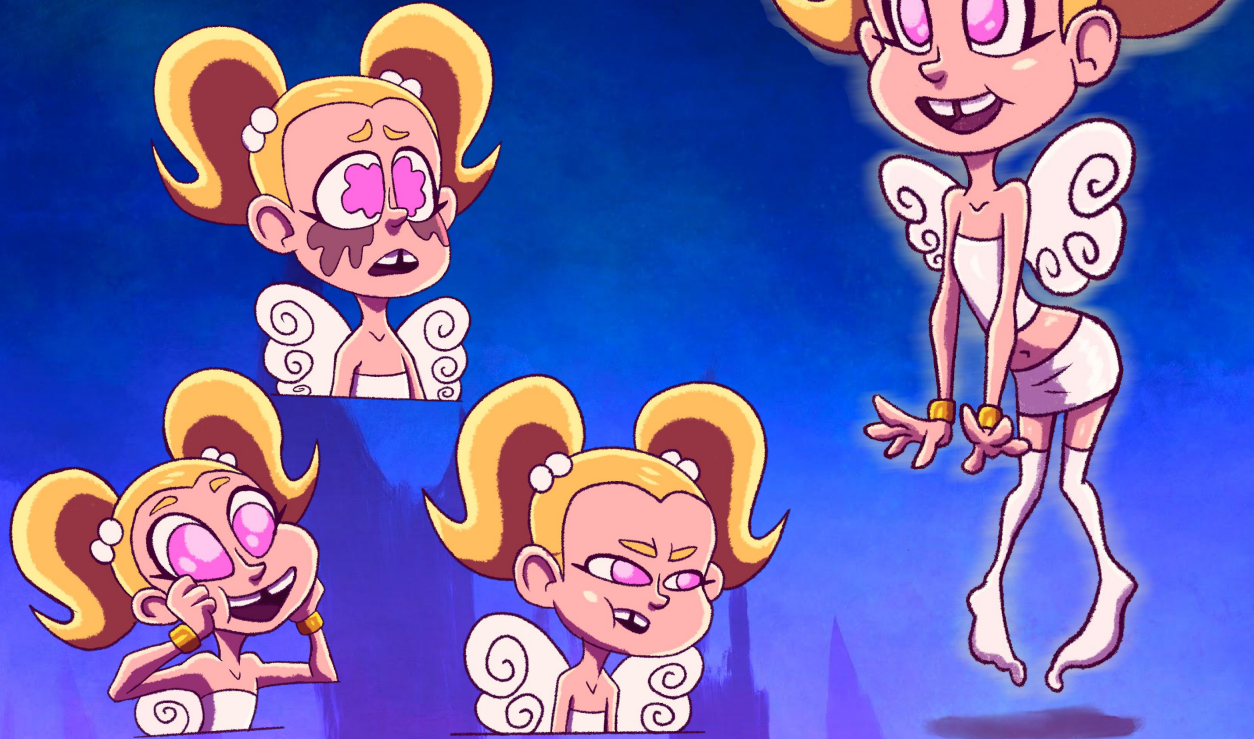
Jill

A bleeding heart chaotic scavenger looking to help those in need.



Beatrice

A bubbly angel with a strange obsession with Dante.











Let's face it,
we're going the
wrong way

I'm never
wrong

Don't we
have to
know where
we want to
go first?



WANT
WANT
WANT



INQUESOMNIA



INQUESOMNIA





WUDESOMNI





INQUESOMNIA



WUJESOMKA





INDIESOMNIX



NOUESOMNIA



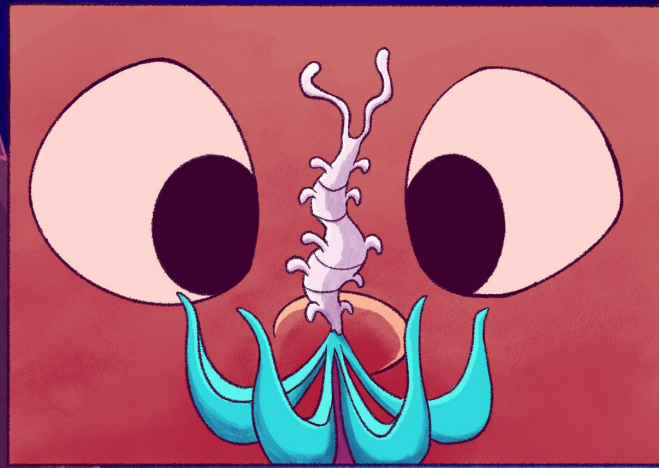


INQUESOMNIA

A Thing

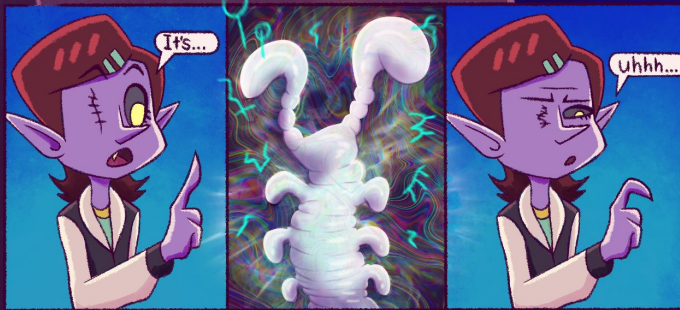
By E.T. Robinson





DON'T TOUCH THAT!

What is it?







The background is a deep blue gradient, transitioning from a darker blue at the top to a lighter, almost purple-blue at the bottom. Scattered throughout the upper portion are numerous small, white, star-like specks. In the lower portion, there are dark, stylized silhouettes of people with their arms raised in the air, suggesting a crowd or a group of people celebrating or protesting. The overall mood is dramatic and contemplative.

The End?